

McClellan / Palomar Airport (KCRQ)

CARLSBAD, CALIFORNIA

FBO Information

Western Flight Services
2210 Palomar Airport Road
Carlsbad, CA 92011
Hours of Operation: 6:00 AM – 10:00 PM
Phone: (800)523-4038
ARINC: 130.000
<http://www.westernflight.com/>

Departing:

After turning onto the airport grounds, proceed towards the control tower and bear right to enter the parking lot for Western Flight.

The FBO prefers that we refrain from starting airplanes in the tiedown area. Therefore, they usually stage our airplanes just outside the door (based on the fax schedule sent by AirShares scheduling office). Planes will either be staged right in front of the door or in this tiedown area.

The ramp is not perfectly level and we recommend caution when removing chocks. It may work best to leave chocks in place behind the wheels prior to start up. Please make sure that chocks are not wedged under the wheel fairings, as they can be easily damaged when attempting to taxi off them.

Arriving:

After landing, exit the runway to the south and join taxiway "alpha." AirShares parking is located at the Western Fight FBO just east of the control tower. Park the airplane anywhere on the ramp (usually under the direction of linemen) as it will later be moved to the tiedown by Western Flight.

The ramp is not perfectly level and we recommend caution when exiting the aircraft. Please either set the parking brake before exiting the aircraft (do not forget to release later) or wait until Western Flight staff arrive to chock the airplane.

Mandatory Curfew:

None

Voluntary Curfew (non-regulatory):

"Quiet Hours" 12:00 AM – 6:00 AM

Noise Abatement Procedures:

DEPARTING RUNWAY 24:

Piston aircraft north and southbound depart on 250° track north of Palomar Airport Road until joining the Coastal VFR Flyway offshore.*

Piston aircraft departing eastbound request right downwind. Hold turns until above 800' feet Mean Sea Level (MSL). Fly downwind until above class D airspace. Coordinate on course turns crossing runway 24 final with ATC.

DEPARTING RUNWAY 6:

All runway 6 north and southbound departures request left downwind. Climb to 800' MSL before turning downwind. Continue downwind north of Palomar Airport road until joining ** Coastal VFR Flyway offshore. Avoid residential areas.

All runway 6 northeast through southeast departures fly runway heading until above 1500' MSL, then on course. Avoid residential areas.

ARRIVING RUNWAY 24:

Props enter pattern as instructed by ATC. Remain above 2300' MSL (2000' above ground level [AGL]) until 3 nautical mile (NM) from airport. Avoid residential areas.

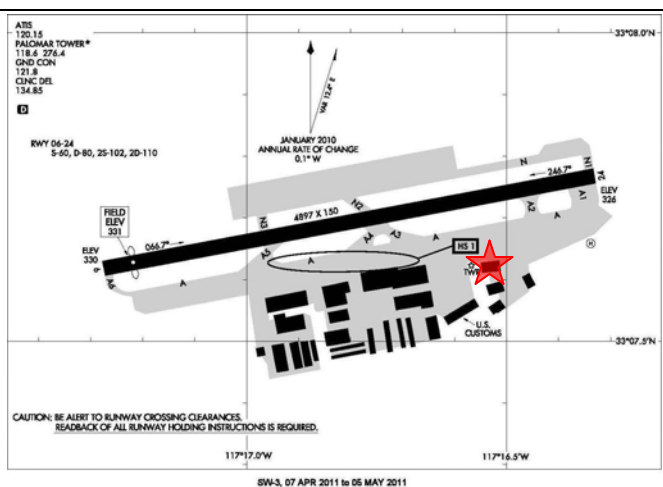
ARRIVING RUNWAY 6:

All fixed wing aircraft remain at or above 2300' MSL (2000' AGL) until 3NM from the airport. Avoid residential areas.

* Refer to San Diego VFR Terminal Area Chart & Charted VFR Flyway Planning Chart

More Local Procedures information:

<http://www.sdcounty.ca.gov/dpw/airports/crqnoise.html>



For informational purposes only and should not be used for navigation.