

Fort Lauderdale Executive Airport (KFXE)

FORT LAUDERDALE, FLORIDA

FBO Information

Banyan Air Services
5360 Northwest 20th Terrace
Fort Lauderdale, FL 33309
Hours of Operation: 24/7
Phone: (800) 200-2031
ARINC: 130.800

Noise Abatement

Runway 26 is the preferred runway. Noise abatement information can be obtained from the airport web-site:
<http://ci.ftlaud.fl.us/FXE/noise.htm>

More Airport information:

<http://www.ci.ftlaud.fl.us/FXE/>

Departing:

Park in the large parking lot behind the FBO and proceed through the back door or side door to the front desk. A Banyan representative will dispatch the aircraft binder with the keys, Flight Detail Sheets, and fuel card upon request.

At Banyan, the aircraft are usually located just outside the back door of the FBO (ramp side door) about 100 yards to the right. A Banyan representative will drive you to the airplane in a golf cart upon request. The tail number is sometimes obscured by other aircraft parked in the same area.

If you require carriage of a life raft during your trip, Banyan can provide one for rental with advanced notice.

Bahamas Flight Information

Banyan Air Bahamas Travel Assistance Program:

http://www.banyanair.com/bahamas_travel_assistance.asp

Official Bahamas Private Flying Web Page:

<http://www.bahamas.com/bahamas/private-flying>

Arriving:

If you are returning from the Bahamas or Caribbean Islands, please remember that you must clear customs, located on the east side of the field, before proceeding to the Banyan ramp.

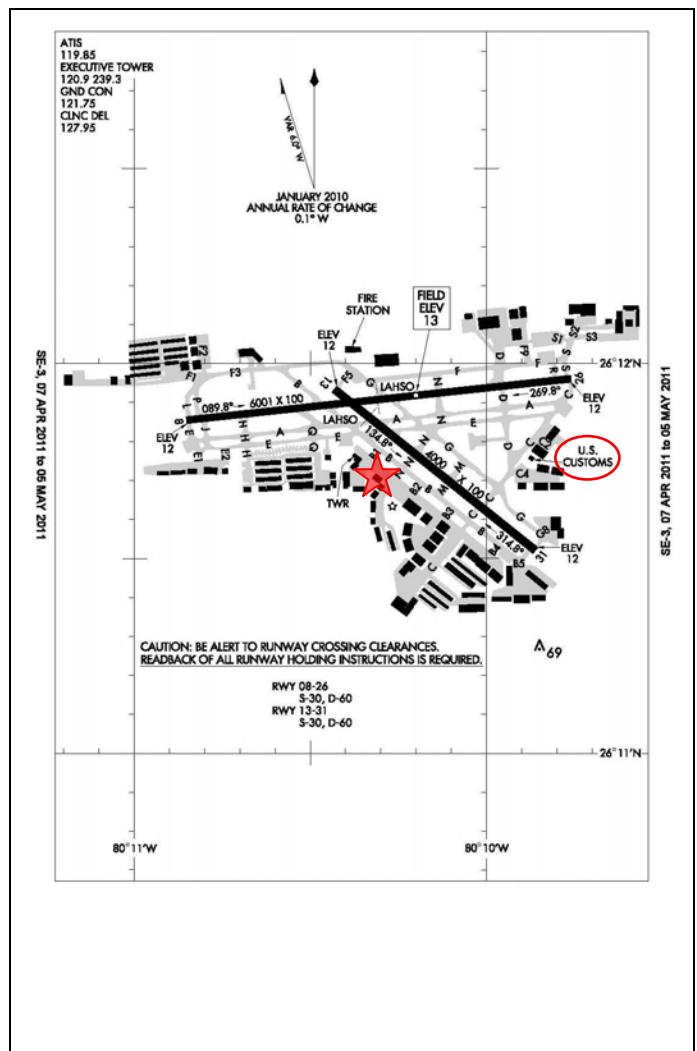
After taxiing onto the Banyan Air Service ramp, find an empty space near to where you departed from. A Banyan line service attendant may direct you to a new space upon your arrival on the ramp.

Mandatory Curfew:

RUNWAY 13-31 CLOSED 10:00 PM – 7:00 AM (When runway 08-26 is operational)

Voluntary Curfew (non-regulatory):

“Quiet Hours” 11:00 PM – 7:00 AM



For informational purposes only and should not be used for navigation.