

FBO Information

Atlanta Executive Jet Center

ARINC 132.0

1723 McCollum Parkway
Kennesaw, GA 30144

770-422-4300 (voice)

800-754-4300 (toll-free)

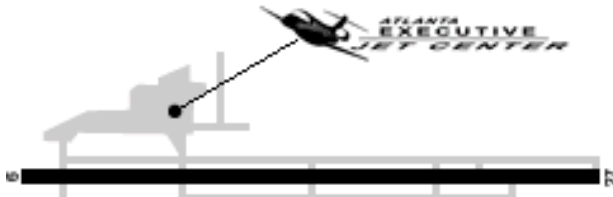
770-422-4382 (fax)

thomas@atlantajetcenter.com

Line Service typically available 6am to 10pm, with 24 hour service available on request.

Cobb County Airport Information:

<http://dot.cobbcountyga.gov/mccollum.htm>



PLEASE :

- 1 Clean up after yourself and replace pitot tube covers if available. Please leave the aircraft in the condition you would like to have it on your next flight.
- 2 Be sure the aircraft is chocked and/or securely tied down after your flight. You may ask line service to assist you, but they may not be immediately available.
- 3 Obey noise abatement procedures (See attached sheet; also available on the airport website).
- 4 Have the customer service reps fax completed flight detail sheets as soon as possible.
- 5 Telephone AirShares Elite to report any serious or airworthiness related squawks.

Dispatch Procedures

Out

Aircraft keys and flight detail sheet binder are kept behind the front desk and must be dispatched by front desk staff. The staff receives a daily fax from which they'll verify your name and scheduled tail number. Also, they may be unaware of last minute changes to the schedule, so please be patient while they call us to confirm your booking if a discrepancy is found.

They will typically position the aircraft very near the ramp door to the FBO, so there shouldn't be much of an issue locating it. It is permissible to call in fuel orders in advance, though please try not call more than a few hours before your flight in case circumstances force you to cancel – this prevents your fuel order from becoming a weight issue for the next client.

The ramp area may be very busy (and noisy), with a mix of large turbine, turboprop, and piston aircraft arriving and departing. PLEASE STAY SAFE AND ALERT AT ALL TIMES. Keep family members close by.

The front desk can provide limited enroute, sectional, and approach charts. There is also a flight school located next door to the FBO with friendly instructors that can help answer questions about the local area. Of course, do not hesitate to contact the local AirShares office and Regional Chief Pilot.

In

A ramp agent will typically meet the aircraft, but it helps to call them on their arinc frequency of 132.00 about 10-15 minutes before arrival to ensure ramp space. If no agent appears, please pull into an appropriate position near the main building.

Return the aircraft key and flight binder to the front desk. Please ensure that the Flight Detail Sheet has been properly filled out and then promptly faxed by the customer service rep. *Airworthiness related issues must be reported to AirShares Elite at 800-482-5411.*

Local ATC Procedures

General

The airport layout isn't particularly complex; there is only one runway which has a parallel taxiway on both sides. There is a displaced threshold for runway 9, limiting usable length to about 5,200 ft. Runway 27 has the full 6,300 ft available. There are wires that cross underneath your flight path on short final to 27, and a large gravel pit just north of the east part of the airport. Landing in this would be bad. It does occasionally cause odd wind currents on approach, and crosswind landings should be carefully considered as the runway is a little narrower than some may be used to (75 ft).

You are under an 8000ft shelf of the class Bravo airspace for Hartsfield (ATL). Southerly departures should be carefully considered, and flight within 1000ft vertically of the Class Bravo should only be conducted with increased vigilance and caution. Beware of wake turbulence from airliners. Pilots new to the Atlanta area should use the VFR terminal area chart. Dobbins air reserve base (MGE, class D) is located only a few miles southeast and its airspace overlaps Cobb County's. If VFR in that direction, ask for an early frequency change to contact Dobbins' Tower (120.75) and have that frequency preloaded before takeoff.

Numerous noise abatement procedures are in effect: <http://dot.cobbcountyga.gov/mccollum.htm>.

IFR

When being vectored onto the ILS, you may be asked to "maintain best forward speed." This is likely due to the sequencing of your airplane in front of faster moving jet traffic. Please do not allow yourself to get bullied into a situation where you're flying the aircraft at speeds that you are not comfortable with. Use of "Unable" or "I can give you 119 knots max" should be considered.

Atlanta approach is available on 121.0 for VFR flight following; this will likely be your assigned departure frequency for IFR.



Hazards

Wake Turbulence

While there is no scheduled commercial traffic, large category corporate aircraft pose some hazard. Military aircraft operate nearby (you may even see an F-22 in the pattern at Dobbins). MANY large airliners inhabit the class B airspace. Please be vigilant when operating within 1000ft of the class B shelf above you.

Weather

Other than some choppy wind currents on final to runway 27 (due to the gravel pit), RYY doesn't get particularly unusual weather. For alternate filing, Lawrenceville usually has the worst ceilings/visibility in the area; Fulton Co. the best.

Limited Off-airport Landing Sites

The densely populated areas surrounding the airport do not offer much in the way of off-airport forced landing sites. CAPS deployment may be the only option, altitude permitting. It is recommended that you brief CAPS to yourself and passengers before take-off and "arm" the system mentally passing through 400-500ft AGL. If taking off from runway 9, interstate 75 may be an option but it likely have quite a bit of traffic. I would strongly consider CAPS.

Towers

There are several towers up to 1500ft AGL within 30 miles. Use caution if operation below 3000MSL (2000AGL) is desired.

Local AirShares Elite Office

AirShares Elite Southeast
1954 Airport Road, Suite 210

Atlanta, GA 30341

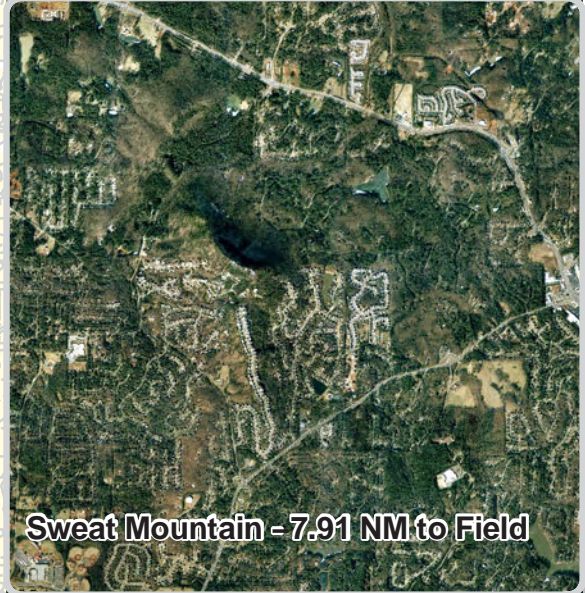
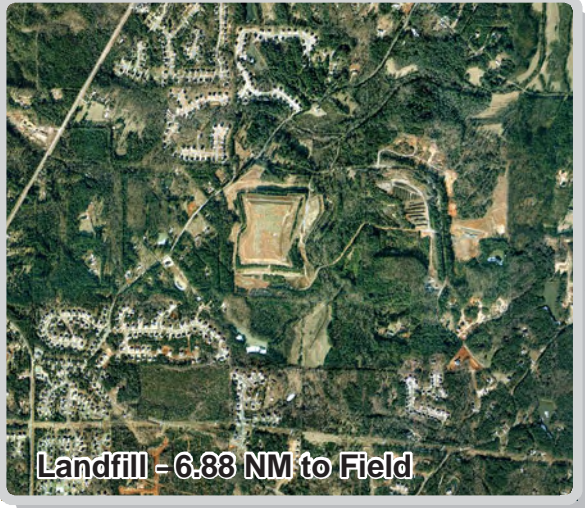
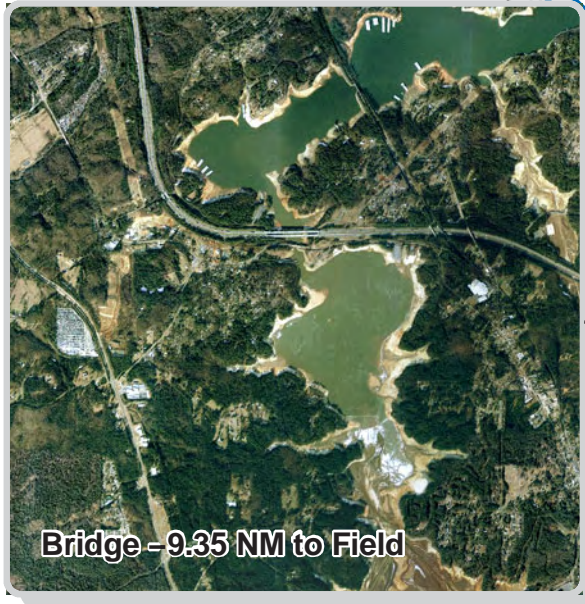
Phone: (678) 581-5962

Fax: (866) 448-4553

Doug Spencer, Manager

Bruce Samulin, Regional Chief Pilot – 678-642-9016

McCollum Field, Cobb County GA



- 4 Mile Radius from McCollum Tower
- 10 Mile Radius from McCollum Tower
- Avoid Flight Below 2,500' msl
- Residential Areas
- Roads**
 - Interstate
 - State Highway
 - Local



Cobb County Govt. makes no warranty as to the accuracy of information depicted on this map. In no event shall Cobb County Govt. be liable for any damages whatsoever (including without limitation, damages for loss of business profits, business interruption, or pecuniary loss) arising out of the use of this map. For general reference purposes only.

Aerial Photography Flown 1-2001
Aerials Express LLC

Nautical Miles

