

John Wayne / Orange County Airport (KSNA)

SANTA ANA, CALIFORNIA

FBO Information

Atlantic Aviation
19711 Campus Drive #100
Santa Ana, CA 92707
Hours of Operation: 5:00 AM – 11:00 PM
Phone: (949)851-5061
ARINC: 131.575

Departing:

The aircraft will be parked in one of two tiedown spaces to the right of the door as you enter to the ramp.

The tiedown spaces are a tight fit to taxi in and out of, so we recommend requesting line service to stage your scheduled aircraft in advance.

Located about two feet west of the aircraft tiedowns is a large black locker. The combination is "16-38-08". You will find oil, cleaning towels, and enough space to store the aircraft cover should you choose to leave it behind.

ASDE-X is in use, ACTIVATE THE AIRCRAFT TRANSPONDER ON THE GROUND.

We strongly recommend that you obtain a Los Angeles Terminal Area Chart (TAC) and study it. Charts and supplies are available at the Orange County Flight Center at 19531 Campus Drive.

Learn to use Tower Enroute Clearances (TEC), as described in the FAA Airport Facilities Directory, to travel IFR between airports in the region.

Arriving:

SNA is situated a few miles east of the Pacific and a marine layer is common all year. Often, the west end of the field falls below VFR minimums while the east end is clear. Riverside and Fullerton Airports (and many others) are within 25 miles northeast and these usually remain VFR long after SNA socks in.

The infamous air pollution and summer haze can significantly reduce in-flight visibility, especially when flying westbound near dusk. Use caution and consider flying IFR regardless of conditions if not familiar with the region.

Mandatory Curfew:

DEPARTURES PROHIBITED (Noise Compliance)
10:00 PM – 7:00 AM Monday through Saturday
10:00 PM – 8:00 AM Sunday

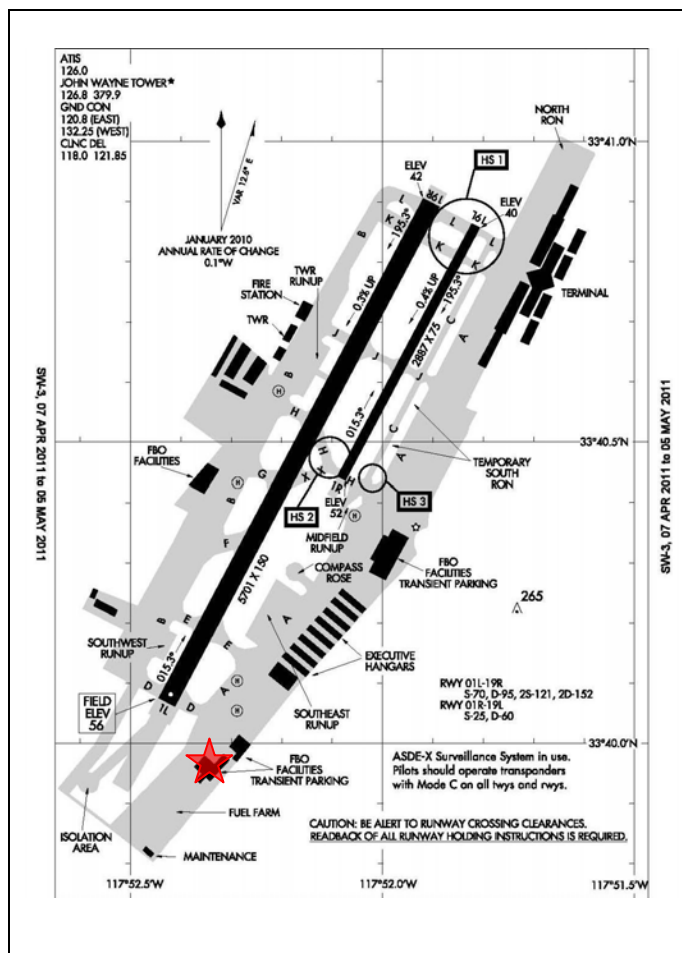
ARRIVALS PROHIBITED (Noise Compliance)
11:00 PM – 7:00 AM Monday through Saturday
11:00 PM – 8:00 AM Sunday

John Wayne Airport is one of the busiest and most noise sensitive airports in the United States. Strict adherence to published noise abatement procedures is imperative. More information can be found on the airport website:

<http://www.ocair.com/GeneralAviation/noise/>

Local Procedures information:

<http://www.ocair.com/GeneralAviation/PilotInfo/>



For informational purposes only and should not be used for navigation.