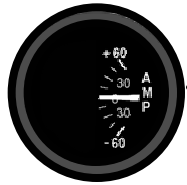


ALT 1  ALT 2

BATT



Bat 1
24V
10 AHr

Bat 2
24V
7 AHr

Alt 1
28V
60A

Main Buses

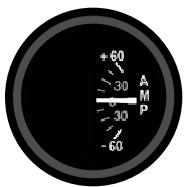
One Way →

Essential Buses

Alt 2
28.75V
20A

ALT 1  ALT 2

BATT

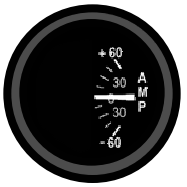


NON-ESSENTIAL		MAIN BUS 2	
SKYWATCH		FUEL PUMP	
GPS 2		TURN COORD. #2	
COM 2		ATTITUDE #2	
ENCODER/XPONDER		HSI/PFD #2	
STORM-SCOPE		ALT 1	
MFD		CABIN LIGHTS	
AUDIO PANEL		STARTER RELAY	
AVIONICS		PITOT HEAT/COOLING FAN	
ENGINE INST		12VDC OUTLET	
INST LIGHTS		STROBE LIGHTS	
PITCH TRIM		NAV LIGHTS	
ROLL TRIM		FLAPS	
ICE PROTECTION			
MAIN BUS 1		NON-ESSENTIAL	
(Landing Light)			

ESSENTIAL	
ANNUN	
TURN COORD #1	
ATTITUDE #1	
HSI/PFD #1	
STALL WARNING	
BATTERY 2	
ALT 2	
ESSENTIAL POWER	
AUTOPILOT	
AVIONICS	
COM 1	
GPS 1	
ESSENTIAL	

ALT 1  ALT 2

BATT

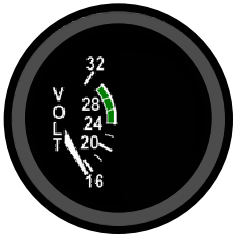


ALT 2

Steady= Fail
Flashing= Overcurrent

ALT 1

Steady= Fail
Flashing= Overcurrent



LOW VOLTS
(<24.5 V)